



Doris Court, Norfolk Avenue  
Toton, Nottingham NG9 6GS

**£105,000 Leasehold**



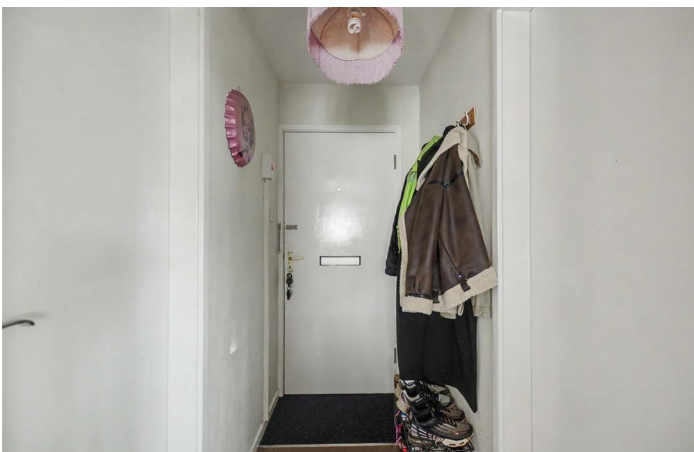
Welcome to this charming flat located in the desirable Doris Court on Norfolk Avenue, Toton. This delightful property offers a perfect blend of comfort and convenience, making it an ideal choice for first-time buyers or those seeking a low-maintenance living space.

The flat features a well-proportioned reception room, providing a warm and inviting area for relaxation or entertaining guests. The single bedroom is thoughtfully designed, offering a peaceful retreat at the end of the day. The bathroom is modern and functional, catering to all your daily needs.

One of the standout features of this property is the availability of parking and a garage, a valuable asset in today's busy world. Additionally, the absence of a chain means that you can move in without delay, allowing for a smooth transition to your new home.

Situated in a quiet and friendly neighbourhood, this flat is conveniently located near local amenities, including shops, parks, and public transport links, ensuring that everything you need is within easy reach.

This property presents an excellent opportunity for those looking to invest in a comfortable and accessible living space in Toton. Do not miss the chance to make this flat your new home.



### Entrance Hall

Entrance door and doors to the bathroom, bedroom and lounge diner.

### Lounge Diner

15'3" x 11'5" (4.66m x 3.5m )

A carpeted reception room with electric radiator, UPVC double glazed windows to the front and side and opening into the kitchen.

### Kitchen

11'5" x 7'6" (3.5m x 2.31m )

Fitted with a range of wall, base and drawer units, work surfaces, one and half bowl sink and drainer unit with mixer tap, electric cooker, tiled splashbacks, laminate flooring, space for a fridge freezer and washing machine, UPVC double glazed door and window to the balcony.

### Bedroom

12'11" x 11'5" (3.96m x 3.5m )

A carpeted double bedroom with electric radiator and UPVC double glazed window to the front.

### Bathroom

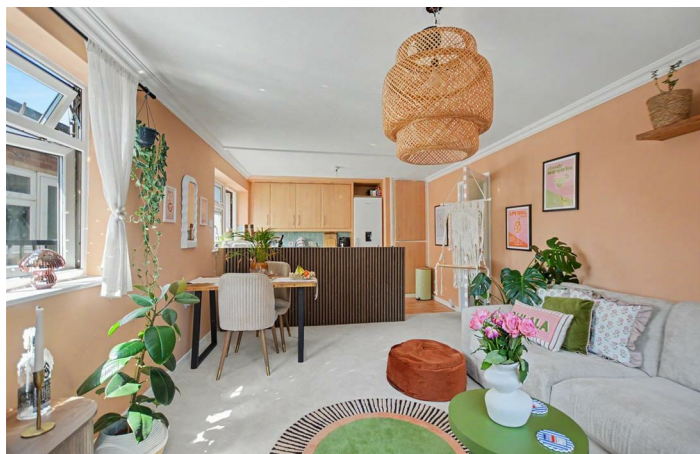
Incorporating a three-piece suite comprising panelled bath with shower over, pedestal wash-hand basin, WC and tiled walls.

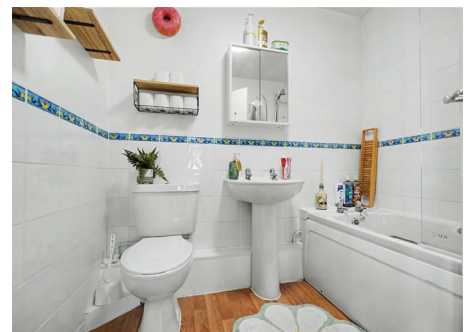
### Outside

Outside the property benefits from communal lawns, off-road parking and a single garage.

### Garage

A single garage with up and over garage door to the front.





Energy Efficiency Rating		Current	Potential
Very energy efficient - lower running costs			
(92 plus) A			
(81-91) B			
(69-80) C			
(55-68) D			
(39-54) E			
(21-38) F			
(1-20) G			
Not energy efficient - higher running costs			
<b>England &amp; Wales</b>		EU Directive 2002/91/EC	
Environmental Impact (CO <sub>2</sub> ) Rating		Current	Potential
Very environmentally friendly - lower CO <sub>2</sub> emissions			
(92 plus) A			
(81-91) B			
(69-80) C			
(55-68) D			
(39-54) E			
(21-38) F			
(1-20) G			
Not environmentally friendly - higher CO <sub>2</sub> emissions			
<b>England &amp; Wales</b>		EU Directive 2002/91/EC	

These details are for guidance only and complete accuracy cannot be guaranteed. If there is any point, which is of particular importance, verification should be obtained. All measurements are approximate. No guarantee can be given with regard to planning permissions or fitness for purpose. No apparatus, equipment, fixture or fitting has been tested.