



25 Silver Birch Close, Nottingham, NG6 8PY

£925 Per Month

25 Silver Birch Close, Nottingham NG6 8PY

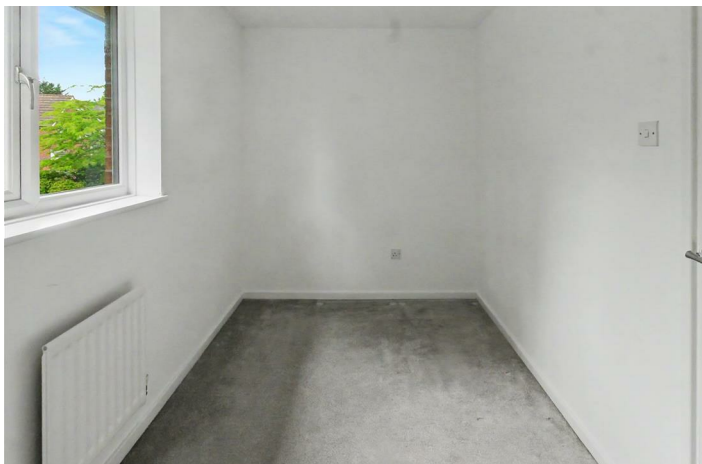
Robert Ellis are pleased to offer for rent, this well-presented two-bedroom end-terrace property situated in the popular residential area of Silver Birch Close, Bulwell, offering excellent transport links to the M1 motorway and Nottingham City Centre.

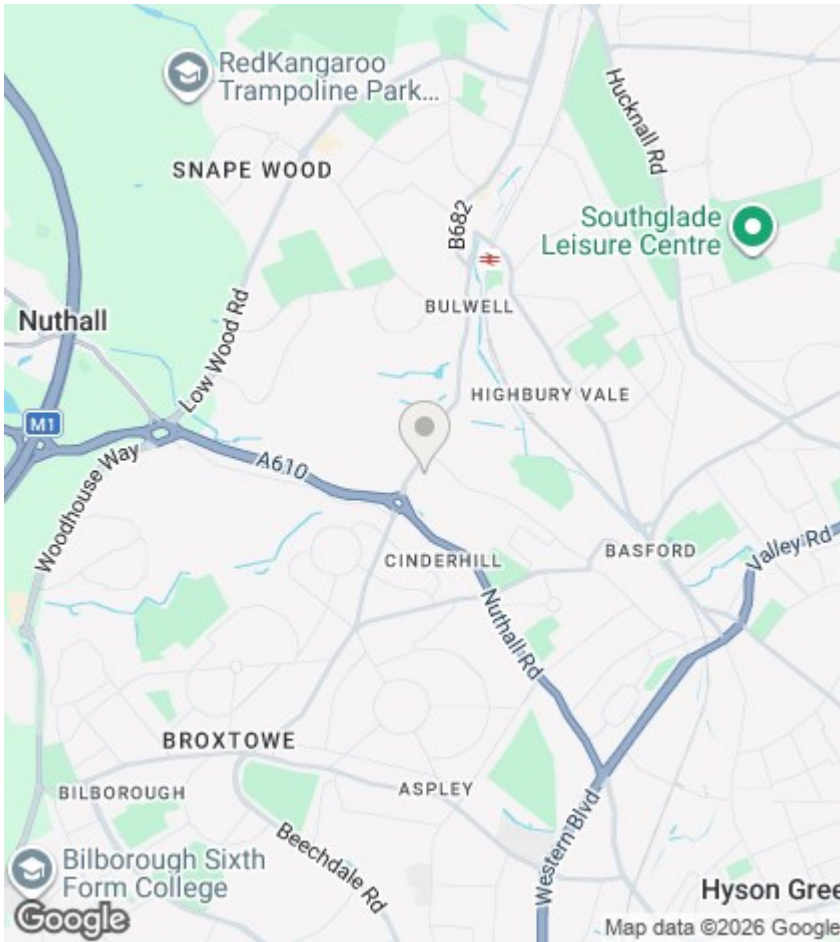
The accommodation briefly comprises a spacious and inviting living room featuring a decorative fireplace, a modern fitted kitchen with ample storage space, and direct access to a private enclosed rear garden. To the first floor are two generously sized bedrooms and a contemporary family bathroom.

This property would make an ideal home for professionals, couples, or small families seeking convenient access to local amenities and transport networks.



Council Tax Band: B





Directions

Viewings

Viewings by arrangement only. Call 0115 6485485 to make an appointment.

EPC Rating:

D

Energy Efficiency Rating		Current	Potential
Very energy efficient - lower running costs			
(92 plus) A			
(81-91) B			87
(69-80) C			
(55-68) D		62	
(39-54) E			
(21-38) F			
(1-20) G			
Not energy efficient - higher running costs			
England & Wales		EU Directive 2002/91/EC	