



125A Breedon Street, Long Eaton, Nottingham, NG10 4EW
£650 Per Month

125A Breedon Street, Nottingham NG10 4EW

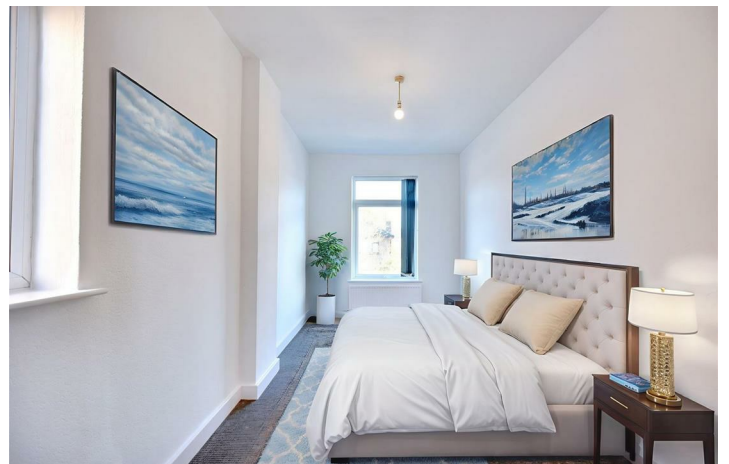
New to the rental market this unique one bedroom house located on Breedon Street in Long Eaton with easy access to Long Eaton and good road links A52 & M1.

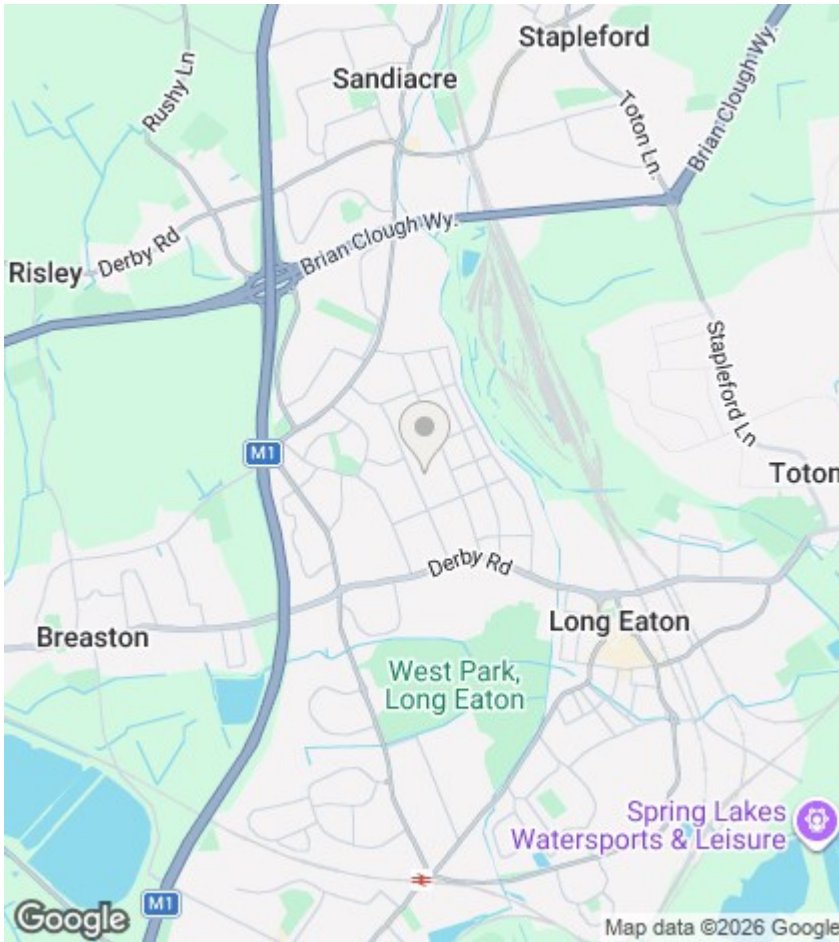
The property comprises of side entrance door into lounge with feature fireplace, kitchen located to the rear elevation with matching range of wall and base units with built in electric oven, gas hob and extractor hood over there is also a washing machine (left as gesture of goodwill). to the first floor is one double bedroom with white suite incorporating wash hand basin, low level WC and shower attachment over the bath. Outside the property is a small seating area. Accompanied viewing.

Available NOW



Council Tax Band: A





Directions

Viewings

Viewings by arrangement only. Call 0115 9466946 to make an appointment.

EPC Rating:

Energy Efficiency Rating		
	Current	Potential
<i>Very energy efficient - lower running costs</i>		
(92 plus) A		
(81-91) B		
(69-80) C		
(55-68) D		
(39-54) E		
(21-38) F		
(1-20) G		
<i>Not energy efficient - higher running costs</i>		
England & Wales	EU Directive 2002/91/EC 	