



22 Boundary Road, Beeston, Nottingham, NG9 2RF

£1,000 PCM

22 Boundary Road, Nottingham NG9 2RF

SPACIOUS THREE-BEDROOM HOME AVAILABLE NOW IN THE HEART OF BEESTON

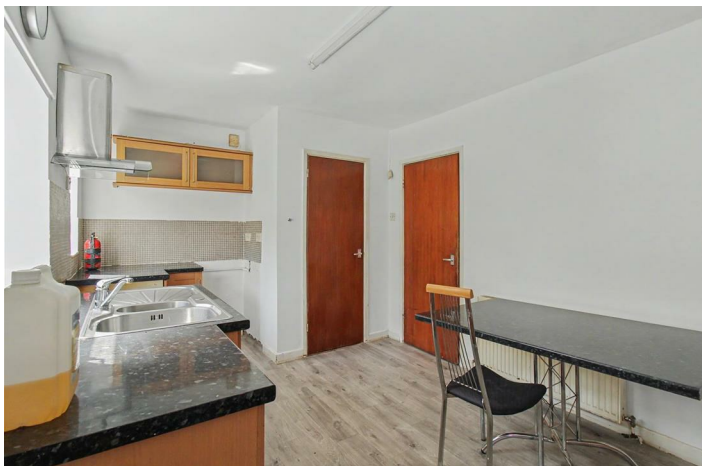
Robert Ellis are pleased to present this well-proportioned three-bedroom property to the market. Benefiting from off-road parking and a generously sized rear garden, this home is offered part-furnished or unfurnished, subject to negotiation.

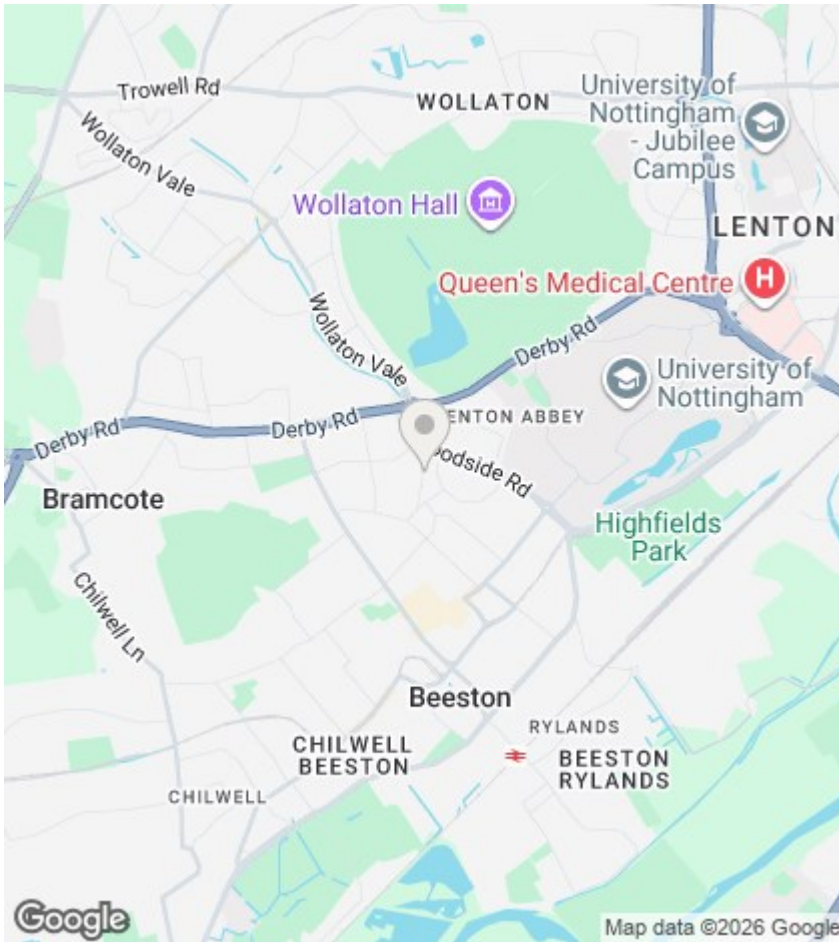
The accommodation briefly comprises a spacious lounge and a kitchen/diner with direct access to the rear garden. To the first floor are three bedrooms and a family bathroom.

Available now. Accompanied viewings available through the Beeston Office.



Council Tax Band:





Directions

Viewings

Viewings by arrangement only. Call 0115 9229090 to make an appointment.

EPC Rating:

Energy Efficiency Rating		Current	Potential
Very energy efficient - lower running costs			
(92 plus) A			
(81-91) B			
(69-80) C			
(55-68) D			
(39-54) E			
(21-38) F			
(1-20) G			
Not energy efficient - higher running costs			
England & Wales		EU Directive 2002/91/EC 	