



4 Doncaster Grove, Long Eaton, Nottingham, NG10 2BA

£925 PCM

- 1 Bathroom
- 3 Bedrooms
- Small Garden
- Unfurnished Property
- Long Eaton
- 1 Receptions
- Driveway Parking Available
- Children Welcome
- Mid Terraced House

4 Doncaster Grove, Nottingham NG10 2BA

New to the market three-bedroom mid terraced property located on the outskirts of Long Eaton but close enough for all local amenities and road links for both Nottingham and Derby.

The accommodation comprises of entrance hallway, lounge to the front with laminate flooring, kitchen to the rear with two large storage cupboards, matching range of wall and base units with built in electric oven, gas hob and extractor hood over.

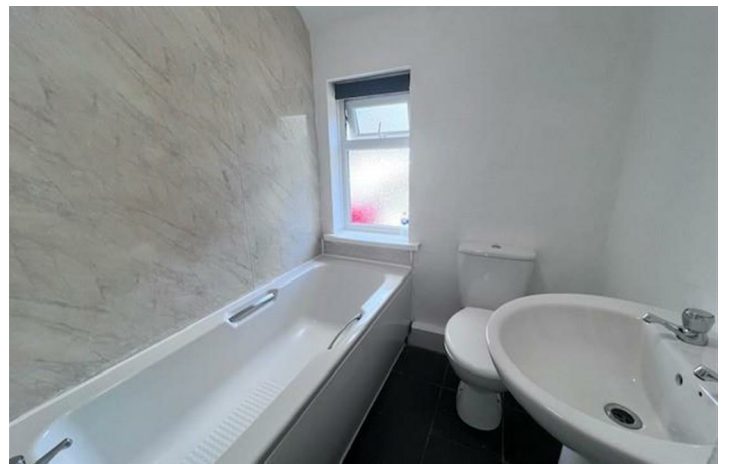
To the first floor are two double bedrooms and large single bedroom with new carpets throughout, family bathroom with white suite and electric shower over the bath.

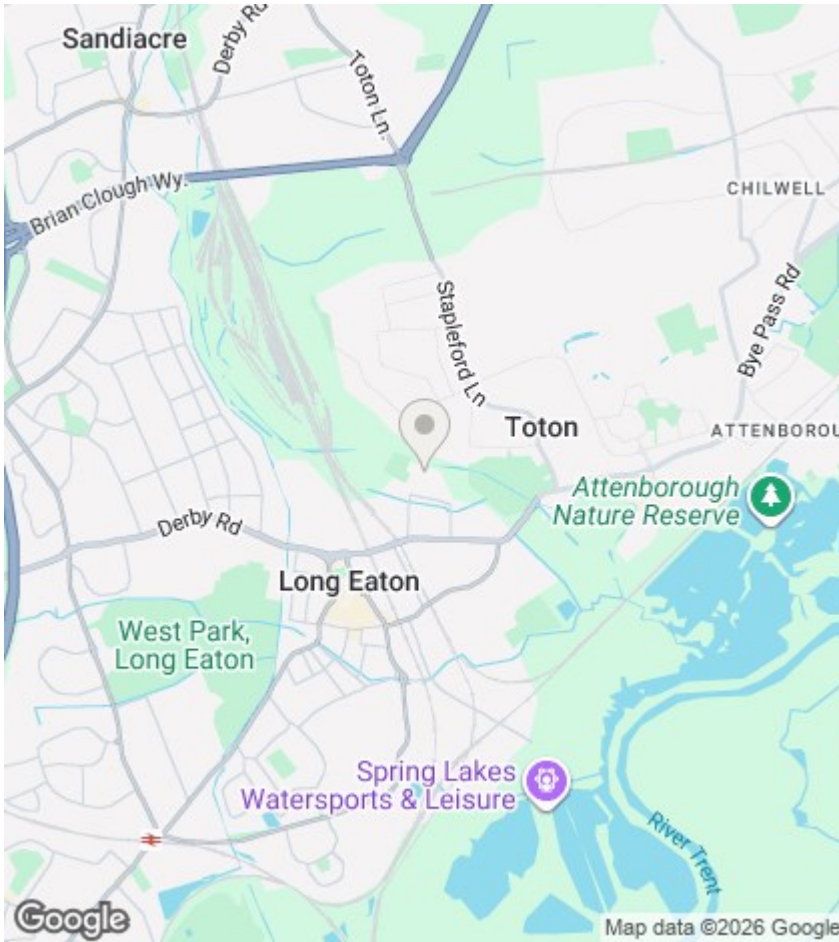
Outside the property is gravel driveway parking, side access gate leading to the rear garden.

Available Late July 2026. Accompanied viewings. Pets Considered



Council Tax Band: A





Directions

Viewings

Viewings by arrangement only. Call 0115 9466946 to make an appointment.

EPC Rating:

Energy Efficiency Rating		Current	Potential
Very energy efficient - lower running costs			
(92 plus) A			
(81-91) B			
(69-80) C			
(55-68) D			
(39-54) E			
(21-38) F			
(1-20) G			
Not energy efficient - higher running costs			
England & Wales	EU Directive 2002/91/EC		