



201 Derby Road, Stapleford, Nottingham, NG9 7AZ

£975 PCM

- 2 Bathrooms
- 3 Bedrooms
- Small Garden
- End Terraced House
- 1 Receptions
- Street parking Available
- Unfurnished Property
- Stapleford

201 Derby Road, Nottingham NG9 7AZ

*** ATTRACTIVE THREE BEDROOM END-TERRACE HOUSE IN STAPLEFORD ***

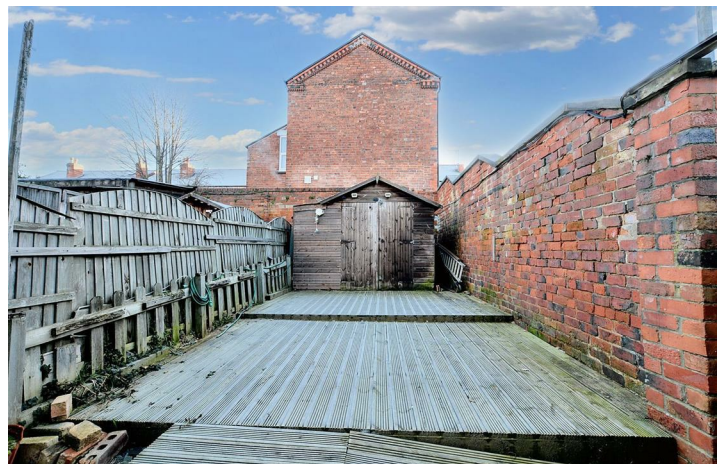
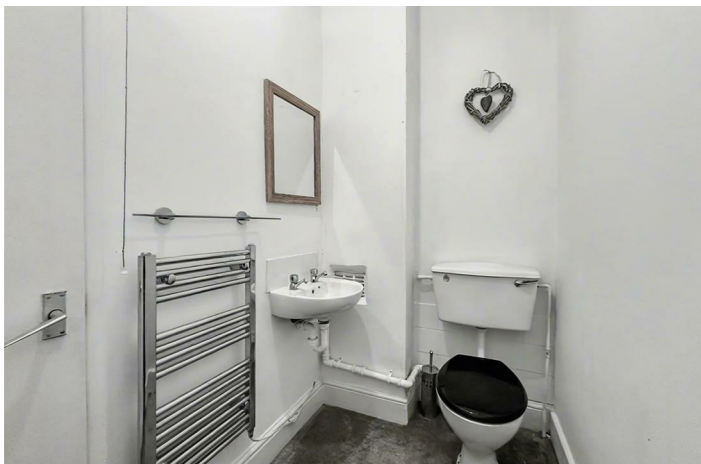
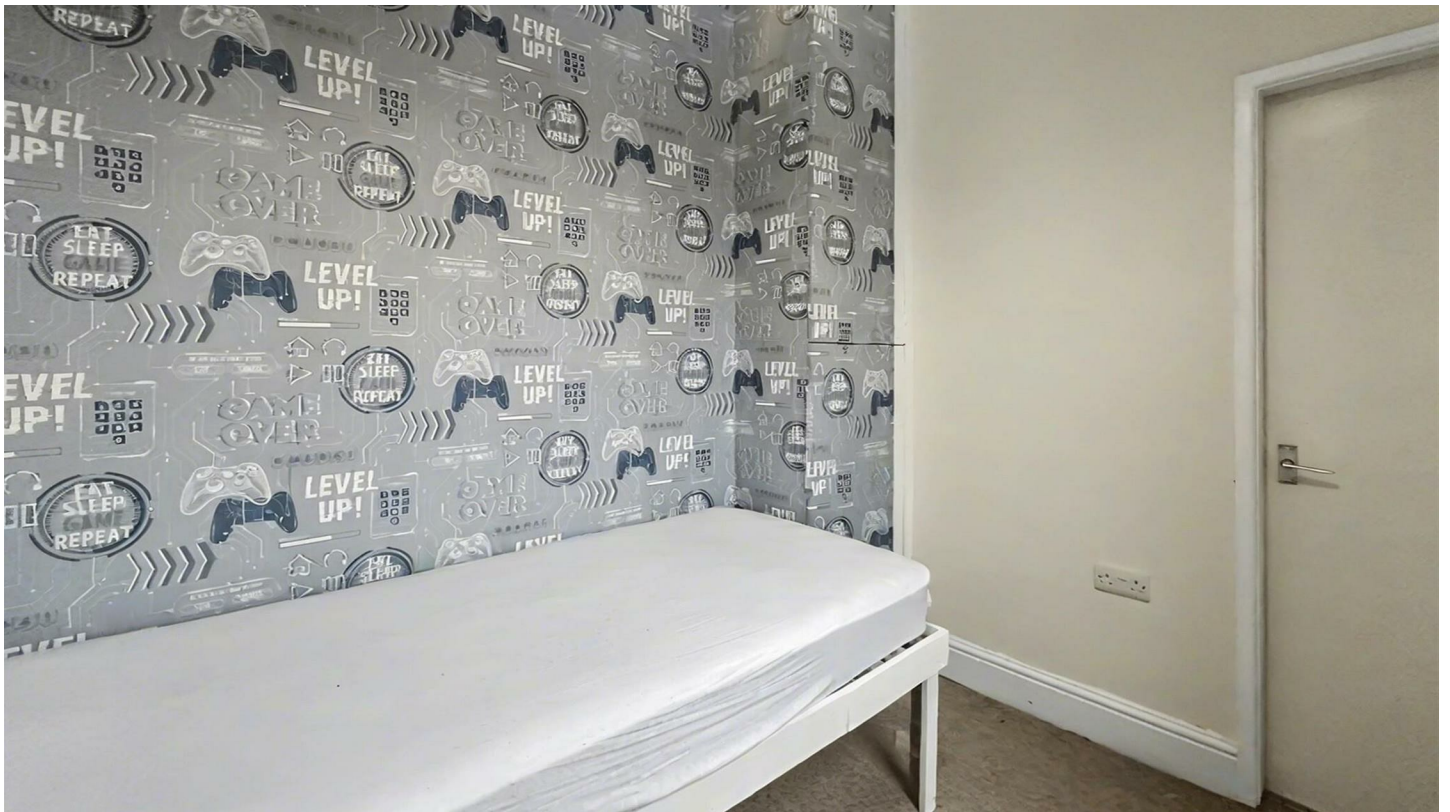
Robert Ellis are pleased to bring to the market this well located, three-bedroom, end-terrace property, situated within the heart of Stapleford. Conveniently positioned close to local amenities, reputable schools and excellent transport links including the A52, M1, bus and tram services, this property is perfect for families or working professionals.

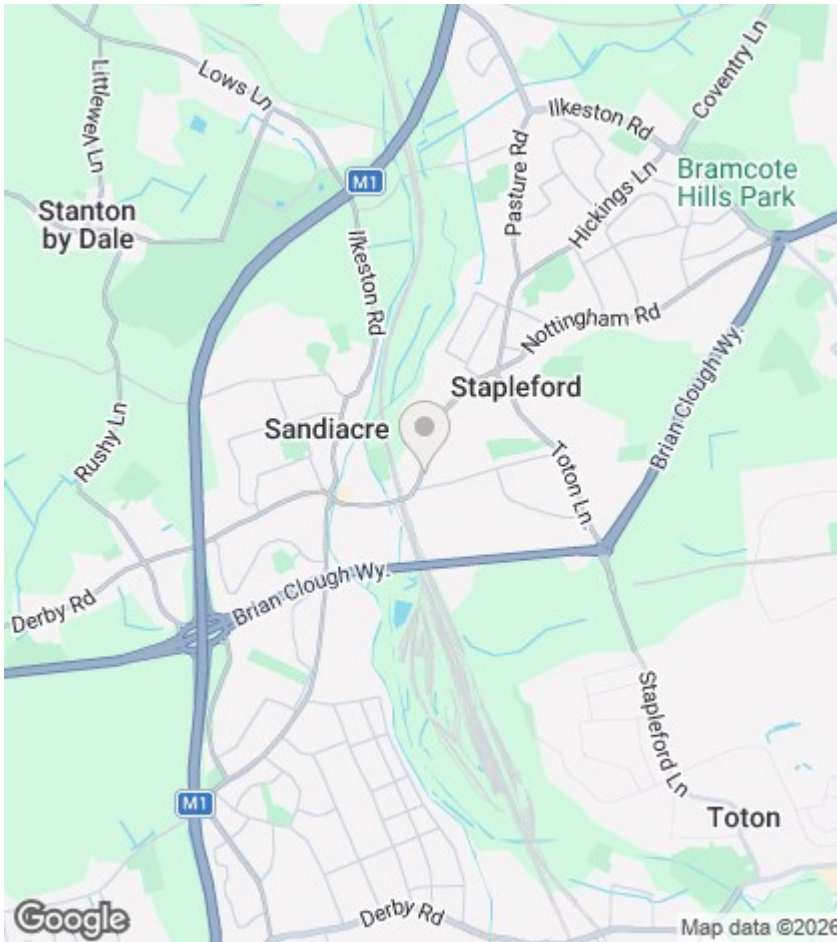
The accommodation comprises a front living room with shelves and electric fireplace, spacious kitchen diner, and a modern ground floor family bathroom.

To the first floor are two spacious double bedrooms and a third single bedroom, with the added benefit of an upstairs ensuite WC. There is also a cellar providing useful additional storage space.



Council Tax Band: A





Directions

Viewings

Viewings by arrangement only. Call 0115 9496740 to make an appointment.

EPC Rating:

B

