



Shipley Lakeside
Shipley, Heanor DE75 7JL

£400,000 Freehold

Looking for a brand new home? Get moving to this stunning home hassle-free with Part Exchange available.

The stylish Windsor, a four bedroom detached home with integral garage offers the best in modern day living for families that want luxury and style.



Looking for a brand new home? Get moving to this stunning home hassle-free with Part Exchange available.

The stylish Windsor, a four bedroom detached home with integral garage offers the best in modern day living for families that want luxury and style.

On entering this beautiful property there are stylish double doors that lead into a bright and spacious lounge, making it the ideal place to relax and unwind after a long day. The impressive, high specification kitchen with family dining area is at the rear of the property and overlooks the beautiful garden. The dining area benefits from classic double French doors leading out onto the garden and is perfect for entertaining on warm summer evenings. Catering for the busy, modern family, the utility room is accessed from the kitchen with a door leading out to the garden and a useful, separate downstairs cloakroom that maximises on space. The integral garage can be accessed from the hallway, making it ideal for storage.

Upstairs there are four well-proportioned luxurious bedrooms and a stylish family bathroom. The stunning master bedroom benefits from a sophisticated dressing area with a luxurious en-suite shower room, creating a glamorous retreat in your own home.



Room Dimensions

Ground Floor

Lounge - 5260mm x 3104mm (17'3" x 10'2")

Dining - 3252mm x 2835mm (10'8" x 9'3")

Kitchen - 3252mm x 3030mm (10'8" x 9'11")

Utility - 2187mm x 1650mm (7'2" x 5'4")

First Floor

Master Bedroom - 3302mm x 3000mm (10'10" x 9'10")

Dressing - 1815mm x 1440mm (5'11" x 4'8")

En suite - 1815mm x 1762mm (5'11" x 5'9")

Bedroom 2 - 4062mm x 2940mm (13'3" x 9'7")

Bedroom 3 - 3302mm x 2650mm (10'10" x 8'8")

Bedroom 4 - 3442mm x 2650mm (11'3" x 8'8")

Bathroom - 2600mm x 2115mm (8'6" x 6'11")

SHIPLEY LAKESIDE

Set on the former grounds of the historic American Adventure theme park, Shipley Lakeside is a stunning new development with a unique lakeside setting that offers over 700 acres of beautiful woodland walks on your doorstep. Enjoy the best in modern comfort, with two-, three-, four- and five-bedroom homes boasting contemporary classic features and exceptional attention to detail throughout.

Shipley Lakeside also offers excellent primary and secondary schools around the local area, making it an great choice for families. Commuters will be able to benefit from convenient transport links being just 9.5 miles from Junction 25 of the M1, which provides direct routes to Mansfield, Nottingham, and Derby. By car, Nottingham is 9.5 miles away and Derby just over 10 miles, both offering an excellent range of shopping facilities, restaurants and green spaces.

It's not just local beauty that Shipley Lakeside has to offer: the nearby Peak District offers stunning views and no end of days out for the family. With the best of both worlds in this wonderfully rural location, this growing community attracts everyone looking for something a little bit different. This expansive waterside location guarantees idyllic walks and a peaceful way of life with plenty of amenities within easy reach.

*Part Exchange

When using the Harron Homes Part Exchange Scheme to buy your new home you can avoid the traditional, stressful and often lengthy property chains, which are known to be unstable and subject to falling through at any moment.

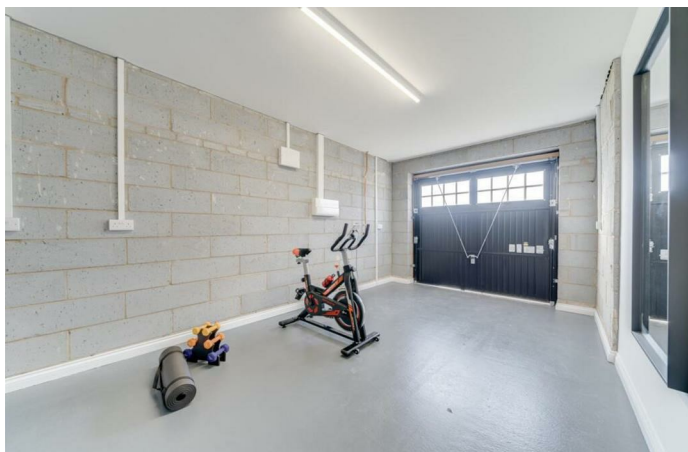
The Part Exchange Scheme provides you with a calm and hassle free buying experience, taking away all the stresses of an unreliable chain and leaving you to enjoy your exciting purchase in peace, as well as avoiding expensive estate agents fees.

In many cases, you can avoid the long wait and move into your new property as soon as it's complete, allowing you to settle in early and get a kick-start on decorating and making your home feel distinctly yours.*

*Not to be used in conjunction of any other offer. Subject to valuation criteria of your current home.

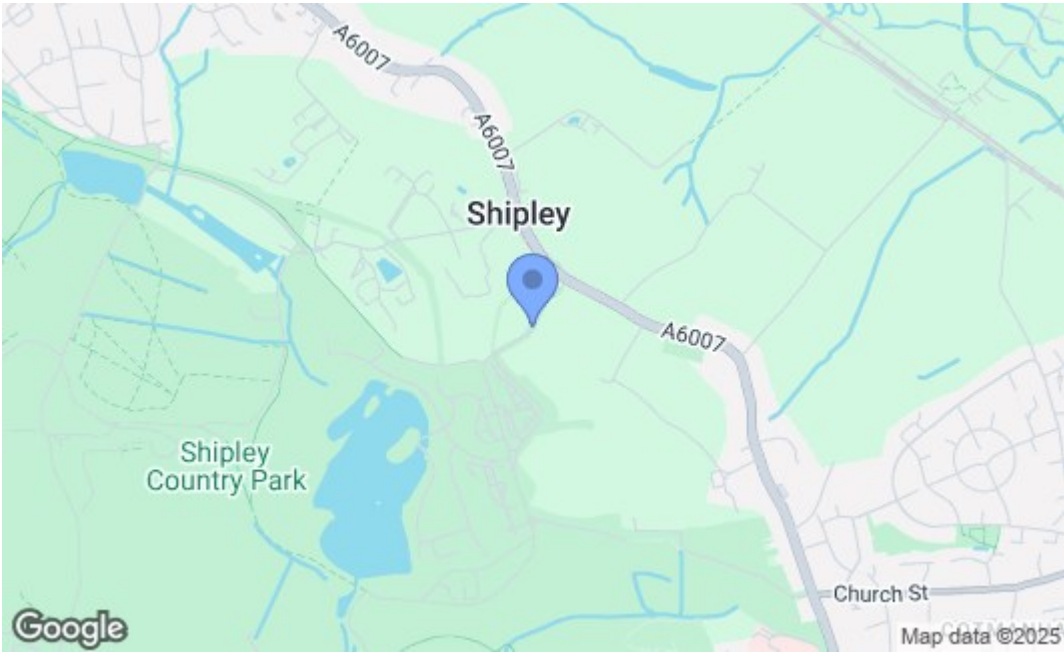
Images

The external image is a CGI and represents the house type. The internal photos are of the house type and show the intended layout and quality of finish.





WINDSOR



Energy Efficiency Rating		
	Current	Potential
Very energy efficient - lower running costs		
(92 plus) A		
(81-91) B		
(69-80) C		
(55-68) D		
(39-54) E		
(21-38) F		
(1-20) G		
Not energy efficient - higher running costs		
England & Wales		EU Directive 2002/91/EC
Environmental Impact (CO ₂) Rating		
	Current	Potential
Very environmentally friendly - lower CO ₂ emissions		
(92 plus) A		
(81-91) B		
(69-80) C		
(55-68) D		
(39-54) E		
(21-38) F		
(1-20) G		
Not environmentally friendly - higher CO ₂ emissions		
England & Wales		EU Directive 2002/91/EC

These details are for guidance only and complete accuracy cannot be guaranteed. If there is any point, which is of particular importance, verification should be obtained. All measurements are approximate. No guarantee can be given with regard to planning permissions or fitness for purpose. No apparatus, equipment, fixture or fitting has been tested.